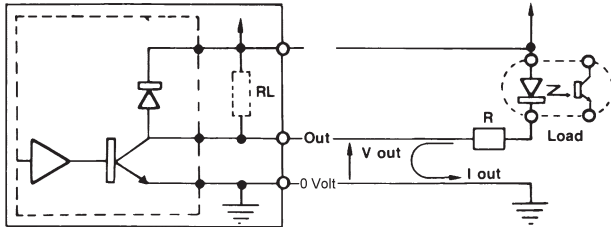




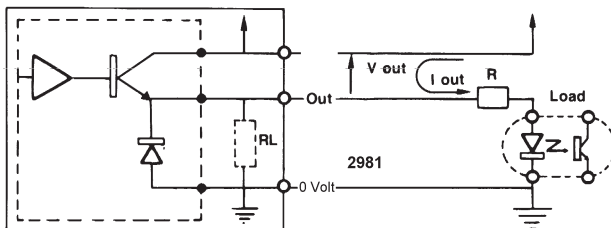
NPN (LOGICA NEGATIVA) NPN (NEGATIVE LOGIC)



Codice di ordinazione *Order code*
22 NPN open collector **22** NPN open collector
23 NPN con pull-up interno **23** NPN with internal pull-up

I_{out} (SINK) 100 mA max
 V_{out} LOW 1,1 V max (a 100 mA)
HIGH V_{cc} (con resistenza di Pull-up)
Resistenza di Pull-up (R_L) 5 V_{cc} $R_L = 680 \Omega$

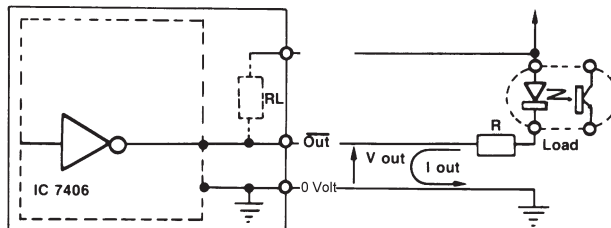
PNP (LOGICA POSITIVA) PNP (POSITIVE LOGIC)



Codice di ordinazione *Order code*
20 PNP open collector **20** PNP open collector
21 PNP con pull-down interno **21** PNP with internal pull-down

I_{out} (SOURCE) 100 mA max
 V_{out} HIGH $V_{cc} - 1,8$ V min (a 100 mA)
LOW 0,2 V max (con resistenza Pull-down)
Resistenza di Pull-down (R_L) 5 V_{cc} $R_L = 680 \Omega$
Pull-down resistor (R_L) 11+30 V_{cc} $R_L = 4,7$ k Ω

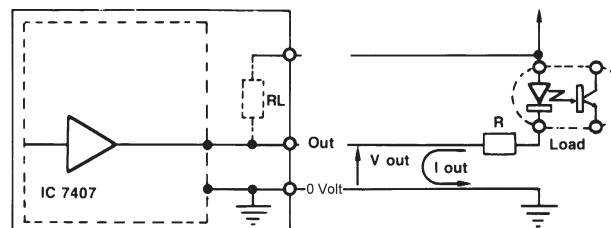
NPN - 7406 (LOGICA NEGATIVA) NPN - 7406 (NEGATIVE LOGIC)



Codice di ordinazione *Order code*
10 NPN open collector **10** NPN open collector
11 NPN con pull-up interno **11** NPN with internal pull-up

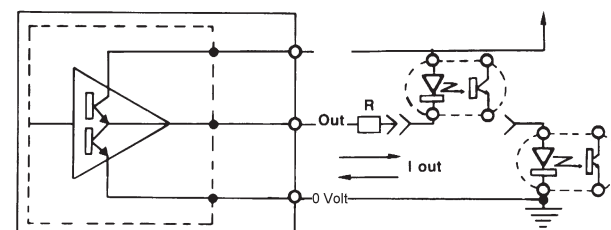
I_{out} (SINK) 40 mA max
 V_{out} HIGH V_{cc} (con resistenza di Pull-up)
LOW 0,7 V max (a 40 mA)
Resistenza di Pull-up (R_L) 5 V_{cc} $R_L = 680 \Omega$
Pull-up resistor (R_L) 11+30 V_{cc} $R_L = 4,7$ k Ω

NPN - 7407 (LOGICA POSITIVA) NPN - 7407 (POSITIVE LOGIC)



Codice di ordinazione *Order code*
12 NPN open collector **12** NPN open collector
13 NPN con pull-up interno **13** NPN with internal pull-up

PUSH-PULL (LOGICA POSITIVA) PUSH-PULL (POSITIVE LOGIC)



Codice di ordinazione **30** *Order code 30*

5 V_{cc}
11+30 V_{cc}
 I_{out} (SINK o SOURCE) 15 mA max
 V_{out} HIGH= $V_{cc} - 1V$ @ 15 mA
 V_{out} LOW= 1V max @ 15 mA

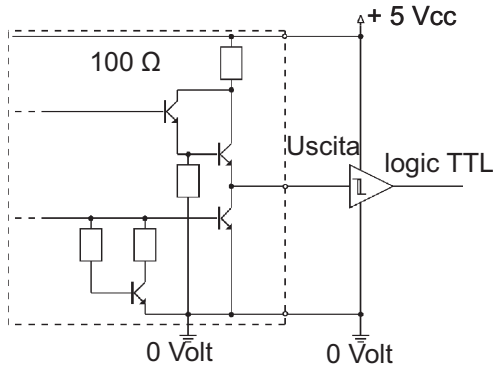


AZIENDA CON SISTEMA
QUALITÀ CERTIFICATO IN
CONFORMITÀ ALLA NORMA
UNI EN ISO 9001:2008
COMPANY WITH QUALITY
SYSTEM CERTIFIED
ACCORDING TO UNI EN ISO
9001: 2008

CARATTERISTICHE ELETTRICHE INTERFACCE ASSOLUTI ELECTRICAL INTERFACE SPECIFICATION FOR ABSOLUTE

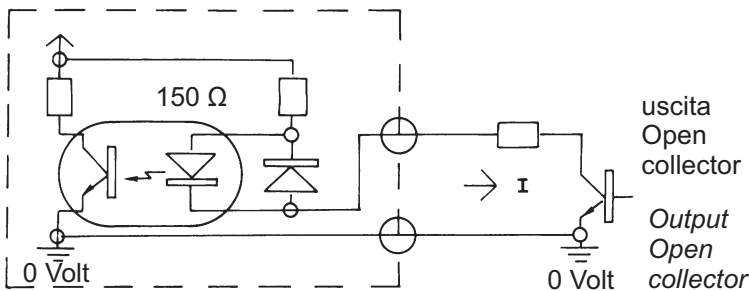
ITALSENSOR S.R.L.

USCITE TTL - Codice di ordinazione 00, 01, 02, 03 TTL OUTPUTS Ordering code 00, 01, 02, 03



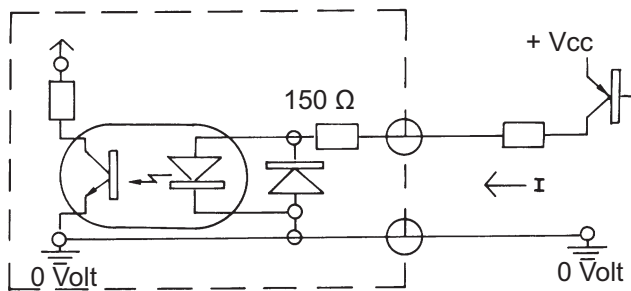
V_{low} (a 12 mA) = $0,25 \pm 0,5$ V
 V_{high} (a 12 mA) = $2,4 \pm 3,1$ V
 I_{max} = 2,5 mA

INGRESSO NPN (per funzioni opzionali) - Codice ordinazione L - U - M - T NPN INPUT (for optional function) - Ordering code L - U - M - T



I_{max} = 15 mA
 I_{min} = 6 mA
 V_{max} = 50 V_{cc} (solo transistori - for short time only)

INGRESSO PNP (per funzioni opzionali) - Codice ordinazione P - W - C - X - N PNP INPUT (for optional function) Ordering code P - W - C - X - N



I_{max} = 15 mA
 I_{min} = 6 mA
 V_{max} = 50 V_{cc} (solo transistori - for short time only)

La Italsensor S.r.l. al fine di migliorare i propri prodotti si riserva di modificarne le caratteristiche senza preavviso.
To improve one's products the Italsensor S.r.l. reserves a right to modify the characteristics of them without notice.