

# PROGRAMMABLE ENCODER

- INCREMENTAL OPTICAL ENCODER, DIAM. 58 MM
- USER PROGRAMMABLE UP TO 65536 PPR
- SELECTABLE BY USER: COUNTING DIRECTION, ZERO PULSE, OUTPUT VOLTAGE
- SOFTWARE FREE OF CHARGE
- USB PROGRAMMING CABLE

**TISP58**  
**TISPW58**



# MAIN BENEFITS

**Warehouse optimization** - ideal solution for different applications that require one single encoder's model, one mechanical setup with different resolutions **up to 65536 ppr**

**Lead time reduction** - timeline reduction in maintenance services

**Costs reduction of downtime** - reduction of time to configure encoders up to your needs. Counting direction, zero pulse and output voltage can be set by end user.

**Device diagnostic** through signaling LED on the encoder's housing.

**Zero adjust** through push button on the encoder's housing

**Easy operation** - no need of any expensive programming tool, a simple USB programming cable is required to power and program both encoders by PC/laptop USB port.



## SOLID SHAFT

Body diameter: 58 mm

Type of flanges: square, servo standard, servo clip, FRE (REO 444)

Diameter shaft: 6, 8, 9.52, 10, 11, 11R

Resolution: from 1 to 65536 PPR

Output interfaces: LD2, PP2

Protection class: IP64, IP65, IP66



## HOLLOW SHAFT

Body diameter: 58 mm

Mechanical assembly with antirotational spring

Diameter blind shaft: 6, 8, 9.52, 10, 11, 12, 12.7, 14, 15 (reducing bushes, except 15 mm)

Resolution: from 1 to 65536 PPR

Output interfaces: LD2, PP2

Protection class: IP64, IP65

# PROGRAMMING

## STEP 1

### ✓ DOWNLOAD SOFTWARE & MANUALS

Download software and manuals for programmable encoders directly from Italsensor's website:

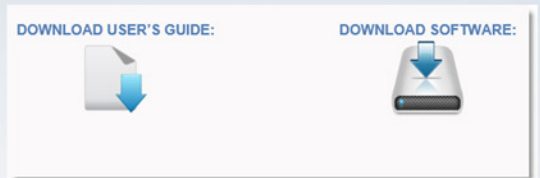
<http://www.italsensor.com/tisp58/>

<http://www.italsensor.com/programmable-tispw58/>

### ✓ INSTALLATION TISP MANAGER

Once download is completed, proceed with installation of file **TISP58 -Manager.exe** following the instructions of manual.

[WWW.ITALSENSOR.COM](http://WWW.ITALSENSOR.COM)



## TISP MANAGER



## STEP 2

### ✓ PROGRAMMING CABLE

Pick up the programming cable and connect it to a free **USB port** on PC, the other end with a 12 pin female connector is to be connected to the encoder's male connector.

Once finished, the green LED indicator on the encoder will turn green.

### ✓ ACTIVATING OF CONNECTION

Once connected, it allows you to select COM port pressing the button **Open COM**

If the operation completed successfully, the software proceeds to read the firmware release and enables configuration panel of encoder's parameters **ENCODER PARAMETERS**

## PROGRAMMING CABLE



# PROGRAMMING

## STEP 3

### √ SETTING PARAMETERES

#### Setting resolution:

to set a new value write the desired resolution in the **PPR box**, valid values range from **1** to **65536** ppr. Press the **WRITE** button. The result of the operation is notified in the summary window - **COMMUNICATION LOG**

#### Reading of the resolution set:

press the **READ** button. If the operation is successful, the readed resolution will be reported into the text box on the left of reading button.

In a similar way proceed with the setting of

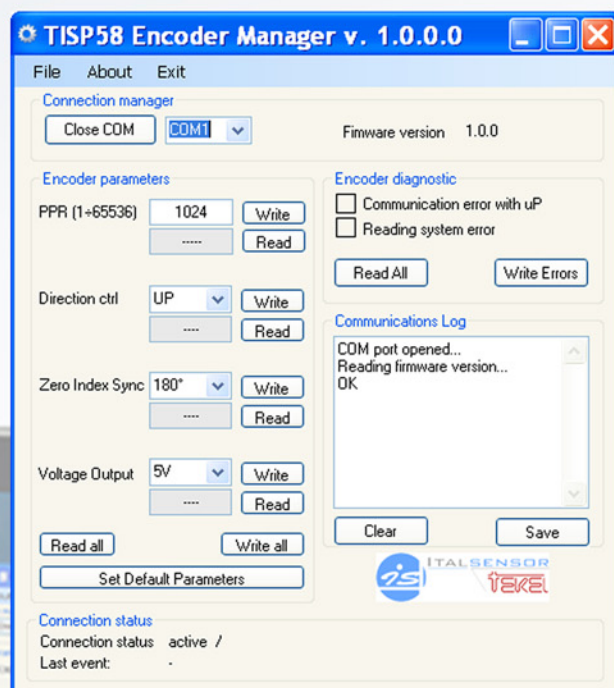
- **counting direction;**
- **zero pulse;**
- **voltage output**

### √ SAVING CONFIGURATION

From the **File** menu select **SAVE CONFIGURATION** option, than choose the file name that will be used to save the actual configuration.

Press **OK** button, and if everything goes smoothly, the **FILE SAVED** notification will appear.

## TISP MANAGER



For more details check user's manuals, available on our website [www.italsensor.com](http://www.italsensor.com) or contact us to [info@italsensor.com](mailto:info@italsensor.com)

Phone: 0039 0121 502 292/025113

ITALSENSOR SRL

WWW.ITALSENSOR.COM